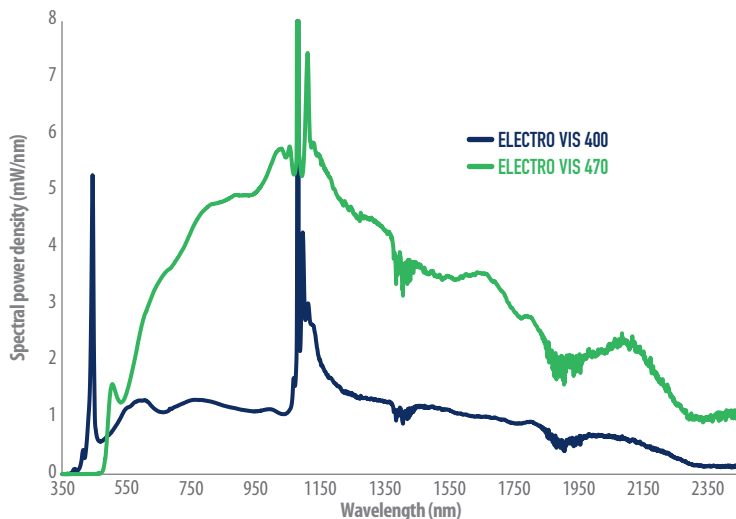


Electro VIS

WHITE LIGHT SUPERCONTINUUM LASER



ELECTRO VIS is the latest development at LEUKOS. Focused on lifetime, power in the visible and ease of use, **ELECTRO VIS** integrates a high end, short pulse modulated diode. For application where reliability and cost reduction are important.



- Supercontinuum lasers
- SCIENTIFIC
- MID-POWER

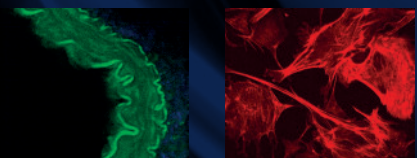


FEATURES

- Broadband 400 - 2400 nm
- Fibered output > 1 W
- Repetition rate up to 10 MHz
- Singlemode Gaussian
- Turn-key
- Highly reliable design
- Long-lifetime

APPLICATIONS

- Spectroscopy
- Optical component testing
- High resolution imaging (OCT)
- Metrology



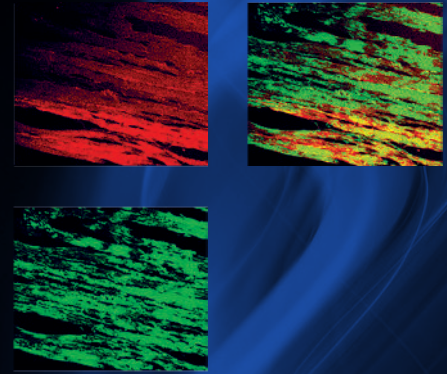
LEUKOS
Make a bright future

Electro VIS

WHITE LIGHT SUPERCONTINUUM LASER

ELECTRO VIS is available either in benchtop or OEM format.

— Supercontinuum lasers
— SCIENTIFIC
— MID-POWER



OPTICAL SPECIFICATIONS		ELECTRO VIS 400	ELECTRO VIS 470
Spectral bandwidth	minimum	< 400 nm	< 470 nm
	maximum	> 2 400 nm	> 2 400 nm
Total average power		> 1,75 W	> 4,5 W
Visible power (< 750 nm)		> 400 mW	> 1000 mW
Repetition rate		3 MHz	10 MHz
Seed pulse width		< 100 ps	
Power stability		< +/- 1 % (pk to pk)	
Spatial mode		Singlemode	
Polarization state		Unpolarized	
Output connection		FC/APC collimator (~ 1m armored cable)	
Synchronization output		TTL / NIM	
OTHER SPECIFICATIONS			
Control interface		Front panel and USB	
Operating temperature		+ 15°C to +35°C non condensing	
Weight		< 10 kg	
Dimensions (LxWxh)		430x330x134 mm	
Power requirements		100-240 V, 50/60 Hz	

ADDITIONAL EQUIPMENT

Achromatic collimated output

Easy fiber coupling with Pop

Tunable filters : Tango, Salsa, monochromators, custom

OPTION

Other repetition rate on request

Longer pulse width on request

LEUKOS
Make a bright future

+33 (0)5 87 20 00 25

contactus@leukos-laser.com

www.leukos-laser.com



CAUTION – VISIBLE AND INVISIBLE
LASER RADIATION AVOID EYE AND
SKIN EXPOSURE TO DIRECT OR
SCATTERED RADIATION
CLASS 4 LASER PRODUCT